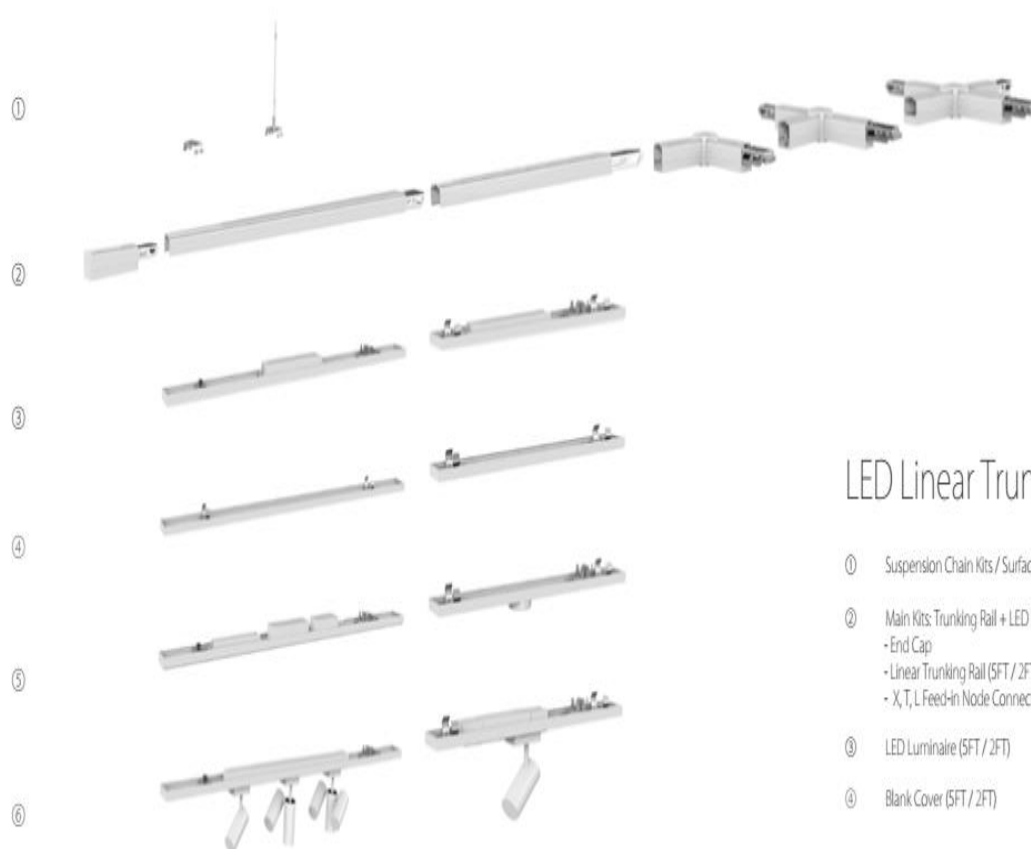


production led lamps since 2004 www.enmled.com

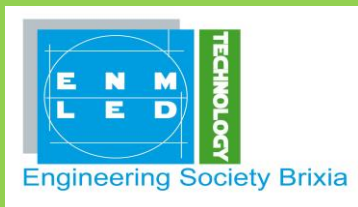


LED Linear Trunking System Over View

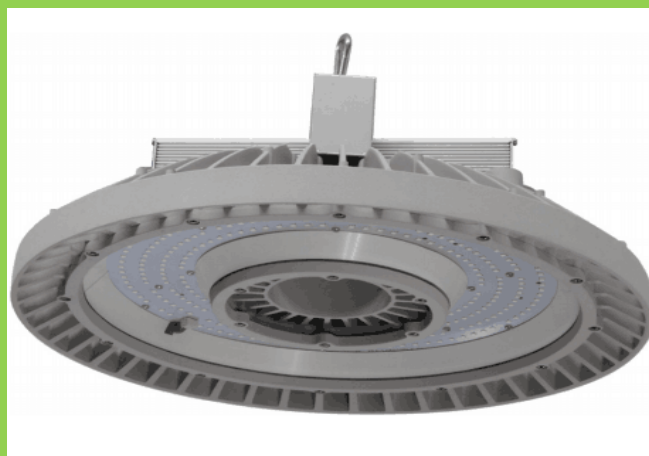
- ① Suspension Chain Kits / Surface Mounted Kits
- ② Main Kits: Trunking Rail + LED Luminaire
 - End Cap
 - Linear Trunking Rail (5FT / 2FT)
 - X, T, L Feed-In Node Connector (Optional)
- ③ LED Luminaire (5FT / 2FT)
- ④ Blank Cover (5FT / 2FT)

Function Optional

- ⑤ Emergency Module (5FT) / Motion Sensor Module
- ⑥ Track Rail



production led lamps since 2004 www.enmled.com



Pag. 2



production led lamps since 2004 www.enmled.com

