

Engineering Society Brixia

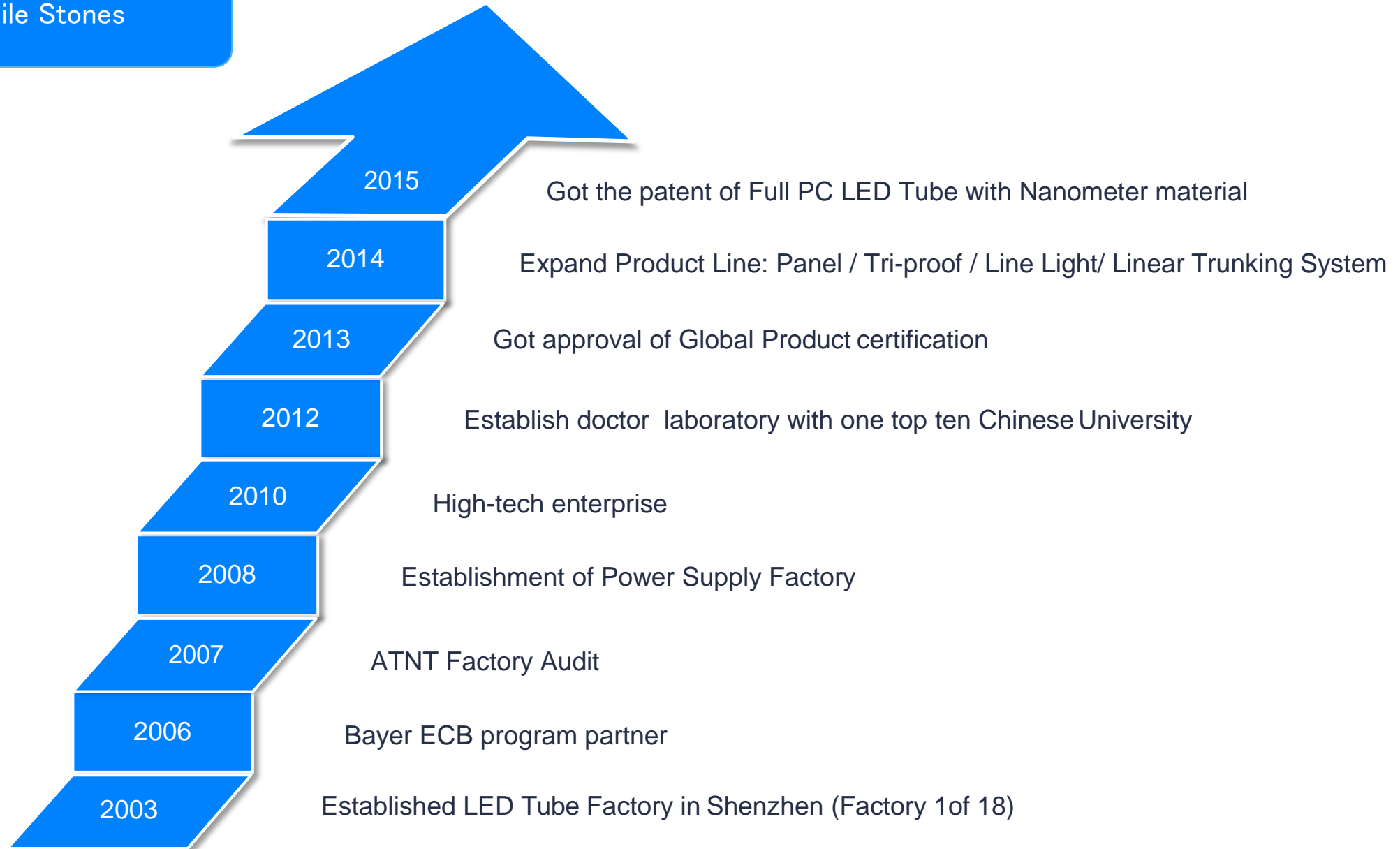
Not a Light, But a Design

Company Introduction

- enm led industry Limited: 08/20/2003 Established
- Main Product : LED Tube / Panel / Strip / Tri-proof / Linear Trunking
- Factory Size: 8500 Square Meters
- No. of Total Employees: 200
- No. of Production Lines: 6
- No. of R&D Staff: 5 / No. of QC Staff: 10
- QA/QC: ISO9001:2006 by BUREAU VERITAS
- Total Annual Sales Volume: 60,000,000 USD
- Main Market: Europe & America



Mile Stones



2016 New LED Light

LED Tube

- T8 . T5. T10 Tube
- AL+PC, Glass Tube
- Intelligent LED Tube
- Special Function Tube
- UL.DLC.TUV.SASO
- LED Coach Tube.

LED Panel

- 600*600mm
- 300*1200mm
- 600*1200mm
- 2.4G+APP Dimmable
- 0-10V Dimmable
- DALI Dimmable
- Emergency Panel
- Microwave Sensor

LED Line Light

- 1200mm
- 1500mm
- 2400mm
- Dimmable(0-10/Dali/PWM)
- Emergency Function
- Sensor Function

LED Tri-Proof

- 600mm
- 1200mm
- 1500mm
- Dimmable(0-10/Dali/PWM)
- Emergency Function
- Sensor Function

LED Linear Trunking

- Linear Luminaire
- Trunking Rail
- Accessory
- Dimmable(0-10/Dali/PWM)
- Emergency Function
- Sensor Function

Production Process

– LED Source Packing

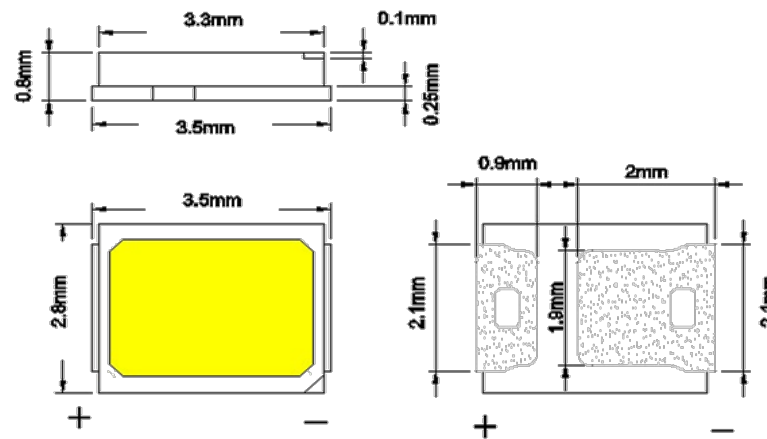
Component of LED Source

- LED Chip: Epistar/ Samsung/CREE
- Wire: 0.999 Gold
- Glue: Dow Corning
- Fluorescent Powder: Intematix
- Heat-dissipating: Heat sink
- Cooling Effect: Good



Parameter of LED Source

- Model: SMD2835/ SMD 5630
- Size: 3.5*2.8*0.8
- CRI: 70-85
- Electric Current: 60mA
- Voltage: 3.0V
- Luminous Flux: 24lm/pcs
- Power: 0.2w



LED Linear Trunking System

– Saving Time and Costs



- **Saving Energy** : 130-150 lm/ w.
- **Saving installation cost:** Modularization design, one people finish installation within 30 seconds without any tools.
- **Saving Maintenance** : Samsung LED , ENEC.TUV approved power supply, strong housing.
- **Saving trunking rail fees:** Seamless and continual connection
- Optional Beam Angle: 30° ,60° ,90° ,120° ,Double 25°
- Application For: Supermarket / Factory / Airport / Warehouse / Hall

LED Linear Trunking System

– Saving Time and Costs –



Model	Length	Power	Light Efficiency	CRI	PF	IP	Beam Angle	Optional Function
CC-LL-4F-3 6W	4FT	36w - 48w	120lm/w - 130lm/w	83RA	0.96	42	30° 60° 90° 120° 30°+30°	DALI Dimming
CC-LL-4F-4 8W		Emergency						
CC-LL-5F-4 8W	5FT	48w - 72w						infrared/Daylight Sensor
CC-LL-5F-7 2W		Radar/Daylight Sensor						

Simple Light Beautifies Your Office

The Pursuit of Simplicity and art of line.


The Pursuit of Modularization – easy installation.

The Pursuit of Energy Saving – high lumen.

Application For: Indoor construction, office, Living room, show room, public area.





Picture	Model	Size (mm)	Power	Beam	Color Temp	RA	PF	Light Efficiency
			r	m	Temp			y
	CC-LLAL-4F	1200*70*50	30w	100°	2800K ~ 6500K	83	0.96	100 lm/w
	CC-LLAL-5F	1500*70*50	42w					
	CC-LLAL-8F	2400*70*50	60w					

LED Tri- proof
- Simple Design -

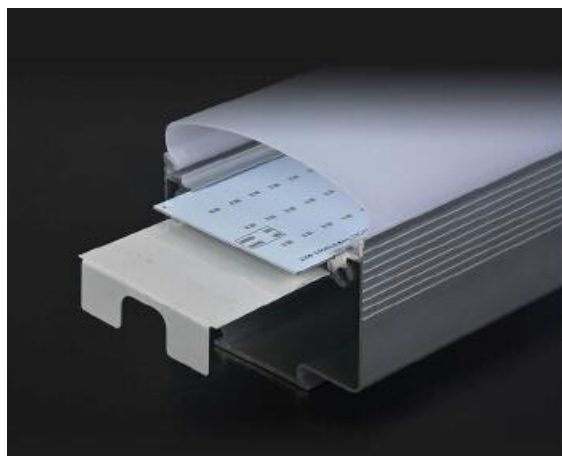


Detail and Quality Orientation

- Thick and smooth surface.
- High quality: IP68, SMD2835, 7 year warranty
- Simple installation: Suspension, Surface Mounted.
Certificate: ENEC, Driver have ETL, CE, ROHS approval
- Application : warehouse, Packing lot, railway station, outdoor usage.

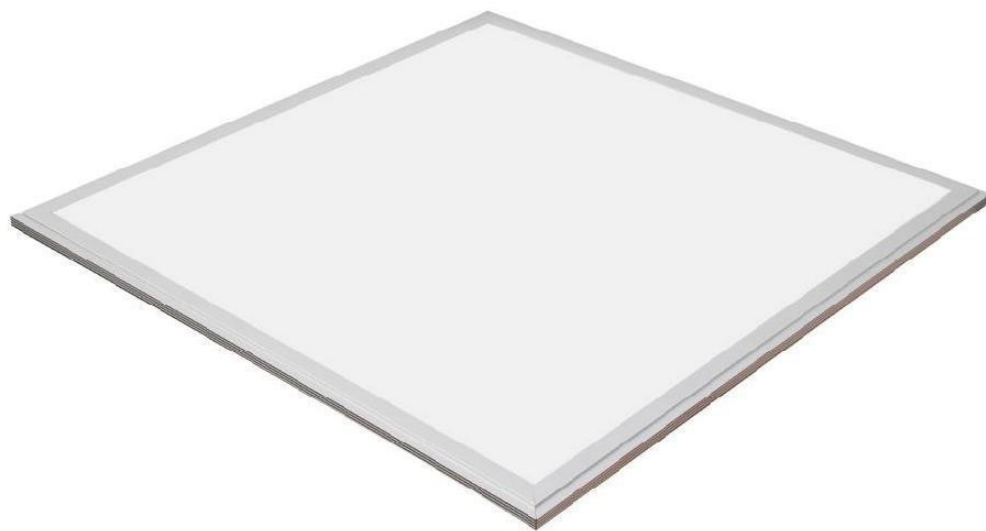
LED Tri- proof

- High Quality -



Style	Length	Power	CCT	Light Efficiency	PF	CRI	Shade	Price (USD)		Function Optional
								>1000pcs	<1000pcs	
CC-LT-2F-26	2FT	26W	2800K - 6500K	115 lm.w	0.96	83	Milky or Clear	\$27.4	\$29.3	1-10v Dimming
CC-LT-2F-32		32W						\$29.1	\$31.2	
CC-LT-4F-45	4FT	45W						\$41.7	\$44.7	Dali Dimming
CC-LT-4F-60		60W						\$45.7	\$49	
CC-LT-4F-60	5FT	60W						\$50.7	\$54.4	Emergency
CC-LT-5F-80		80W						\$66.2	\$70.6	

LED Tri- proof
- High Quality -



Full Series LED Panel:

- 600*600mm Panel
- 300*1200mm Panel
- 600*1200mm Panel
- 2.4G WiFi+APP Dimmable
- 0-10V Dimmable
- DALI Dimmable
- Emergency Panel
- Microwave Sensor
- 130lm/w Panel
- TUV, UL, DLC Passed



LED Tube
- Full Series -

Professional solution meets your any needs!

T8 LED Tube (AL+PC/ Glass)



- 600mm
- 900mm
- 1200mm
- 1500mm
- 1800mm
- 2400mm
- Integrated/ Seperated

T5 LED Tube



- 300mm
- 600mm
- 900mm
- 1200mm
- Integrated/ Separated
- Internal/ External Power

Certified Tube



- UL Approved
- DLC Approved
- VDE Approved
- TUV Approved

Intelligent Tube



- Remote Dimming
- SCR Dimming
- Infrared Sensor
- Audio Sensor
- Microwave Sensor
- Emergency

Special Model Tube



- Waterproof Tube
- T8 To T5 Tube
- Ballast Compatible
- 300 Beam Angle
- Meat Tube
- 140lm/w

LED Coach Tube - Customized -

Special Designed Tube for Bus:

- These lamps tolerate voltage spreads characteristic of light rail train car systems without fluctuating in light intensity.
- The LED Lighting tube can be used in new or to retrofit fluorescent
- Tubes use the latest high power premium LEDs while providing a more superior, reliable and efficient light source than conventional fluorescent systems



LED Tube Specification: T10 Coach Tube Light - 1200mm

L=1157mm normal: AC:24 V 50000hrs 5 Years Warranty Working Temp.: -20°C~65°C

LED Type	Input Voltage (DC Volts)			Input Current (Amp)			RA	PF	Light Efficiency	Luminous Flux(±10%)		
	MIN	TYP	MAX	MIN	TYP	MA				Trans.	Wave	Frosted
Samsung SMD2835	23	37.	42.5	0. 2	0.48	0.78	83	0.96	120 lm/W	1320 lm	0.95 Trans	0.88 Trans.

Customized Solution

1

Project for MCI Coach

- Input DC 24V
- Fire-proof Material
- Special Design For Shock Resistance



2

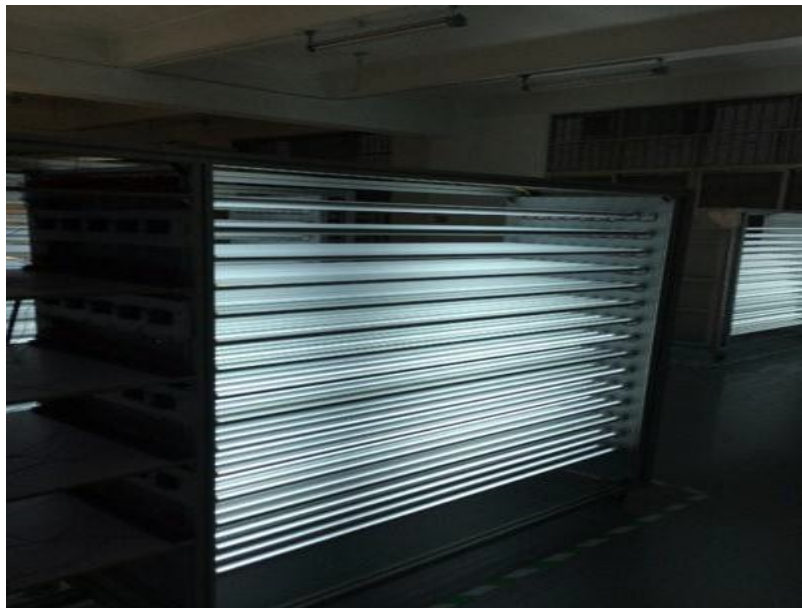
Project for Metro Station

- Input DC 45-110V
- Surge Resistance Design
- 24h/day continually working



Production Process

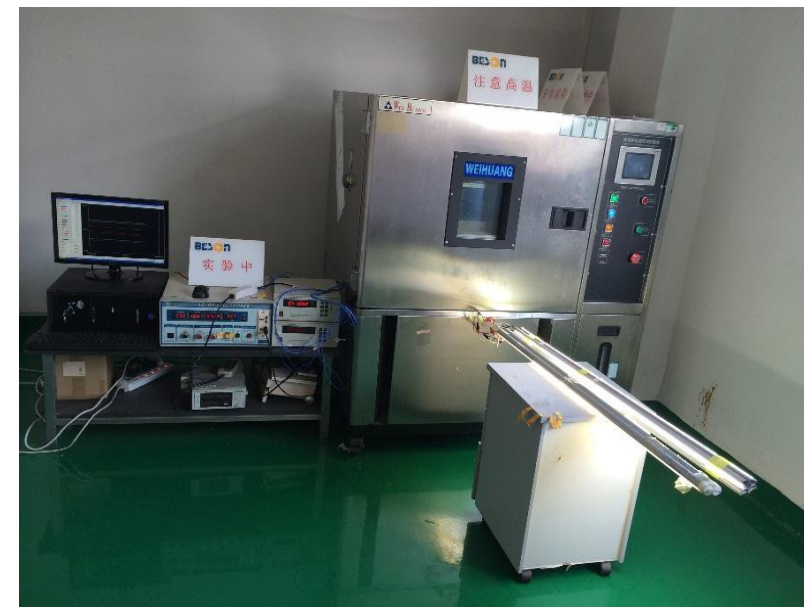
– Final Quality Test –



Ageing Time: 8h
Make sure that all the lights work well



Photoelectric color integral ball test by
EVERFINE Lamp Complete Analysis System



Environmental Lab.
Temperature Resistance Test

Production Capacity

Tube Capacity



100,000 pcs/month

Panel Capacity



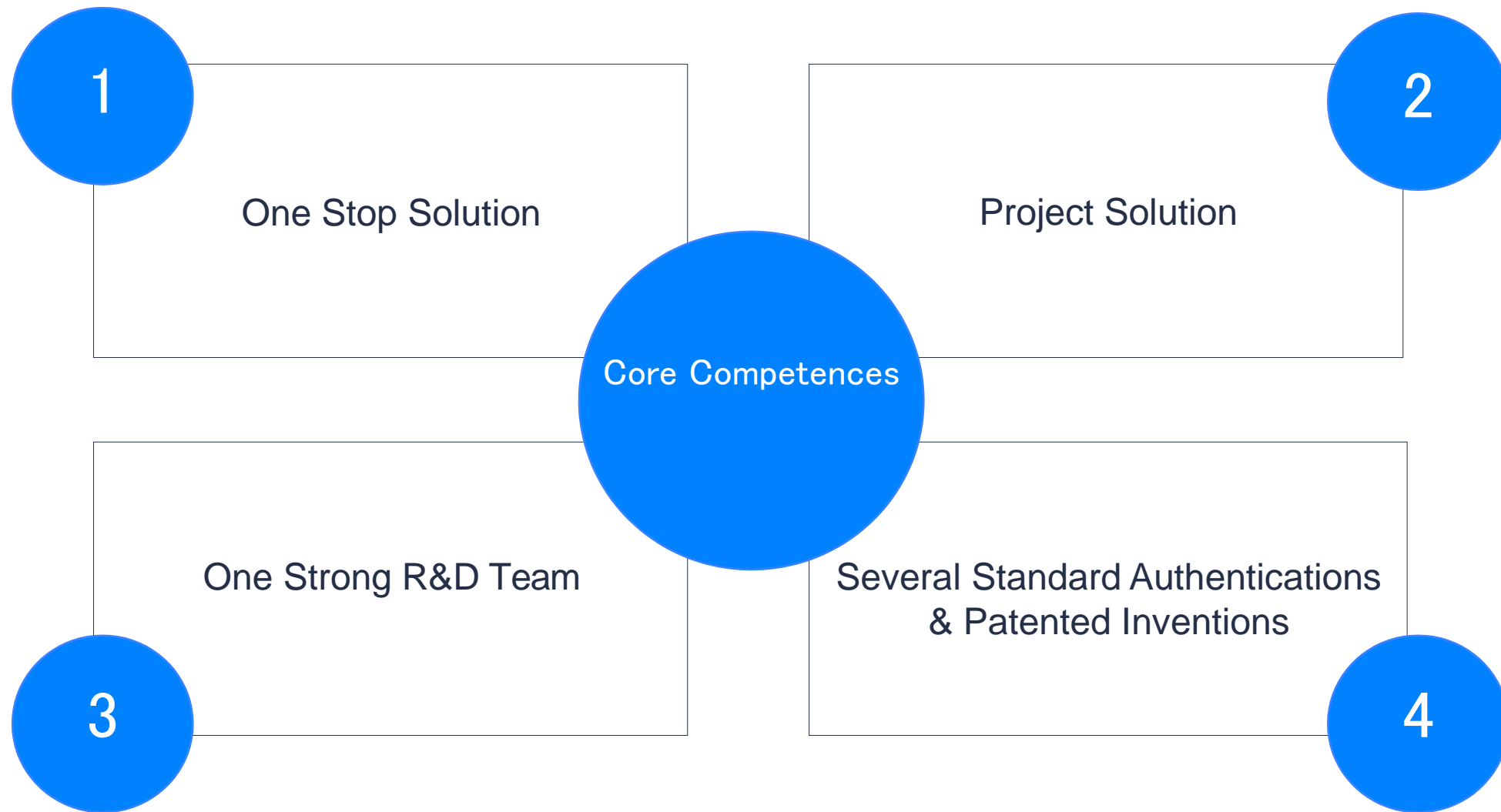
300,000 pcs/month

Linear Capacity

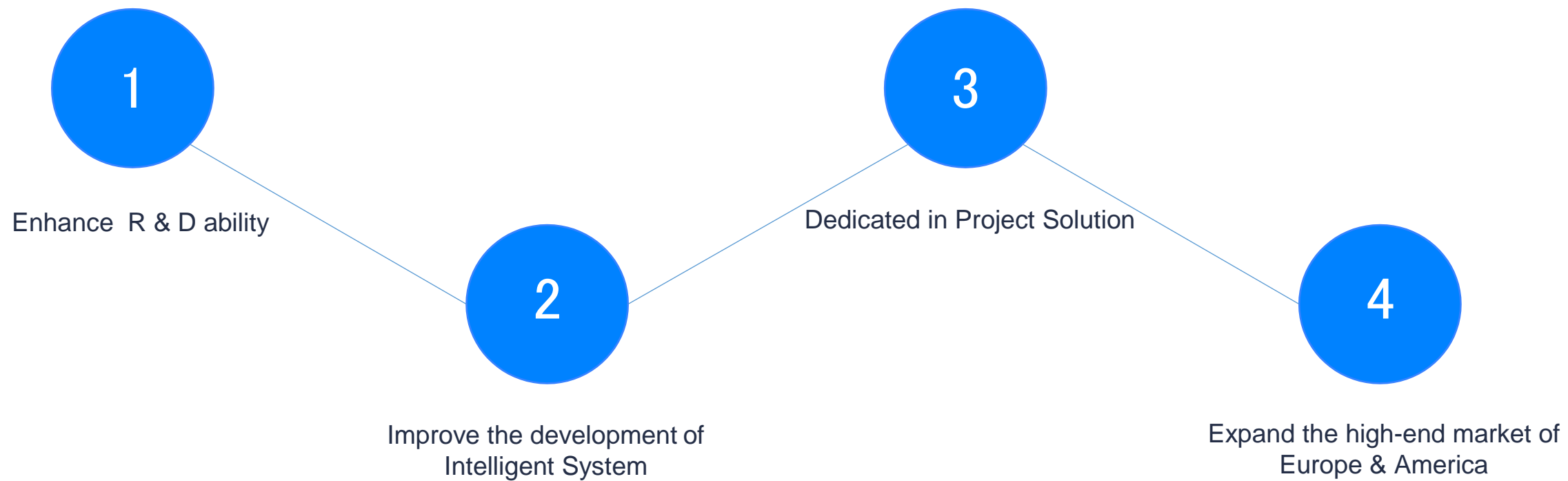


300,000 pcs/month

Enm led Advantages



ENM Led Direction



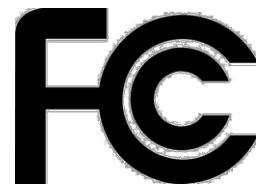
Certification enm led



CE



ROHS



FCC



UL



DLC



TUV



VDE



SAA



INMETRO



ISO-9001

ENM LED industry Partner



Bayer Partner

Bayer Material Science ECB Programm

With lighting being one of the major source of energy consumption, LED technology offers a tremendous solution to significantly reduce the overall environmental impact of buildings. ENM LED industry is welcomed as a new member of Bayer premium network comprising.



ATNT Partner



MAXLiTE Partner



MOTOR Partner



Thank you !